



Ethernet Connection Manual

TP80 SERIES

Rev.1.0

CONTENT

Introduction	1
1. Connected directly by Ethernet cable.....	2
2. Connected by Router	8
3. Connected by Driver	21
4. Connected by Website	31

Introduction

This manual content may be changed without permission and our company reserve the rights to make changes in technology, spare parts, hardware and software of the products. Please contract our company, if the user needs further information about the products. Without any written permission from our company, any section of this manual is prohibited to be copied or transferred in any form.

The following are four types of Ethernet connections between printers and computers:

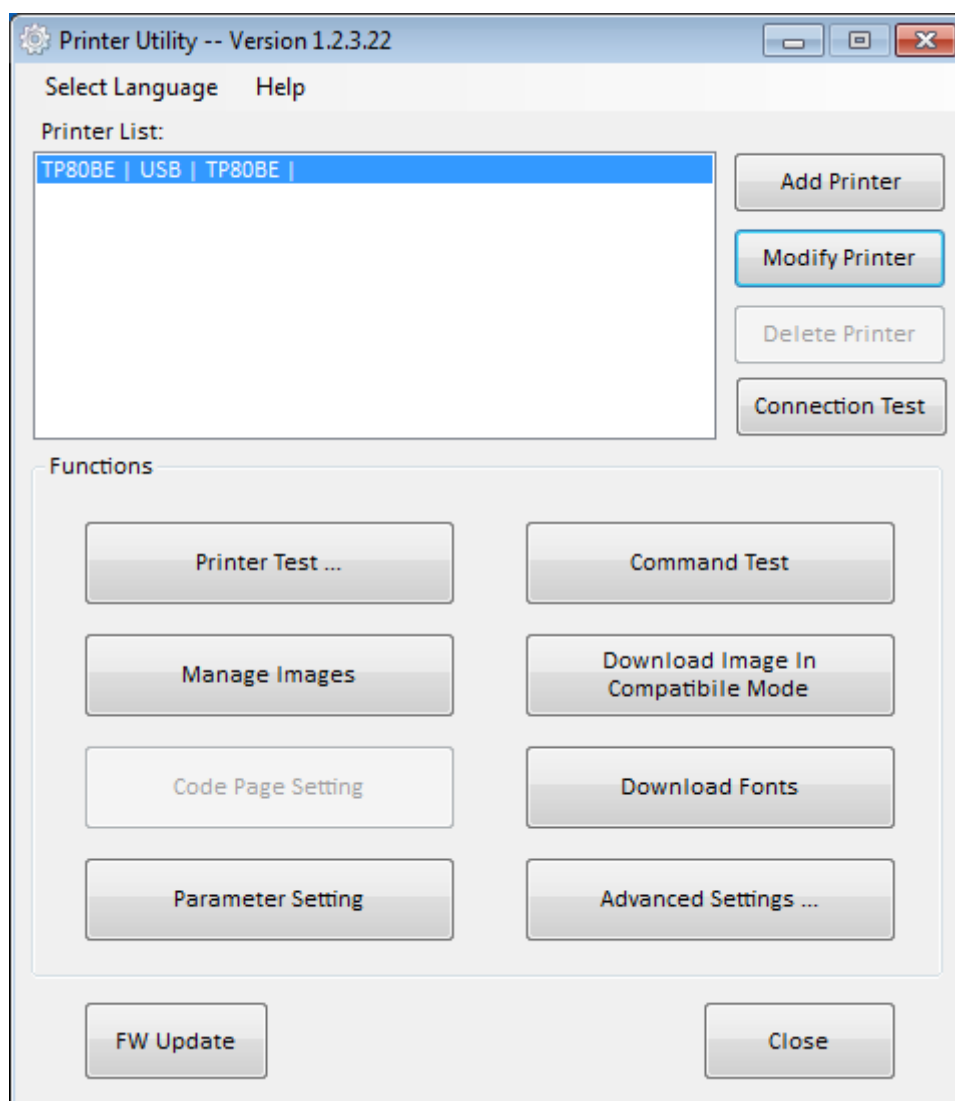
- **Connected directly by ethernet cable**
- **Connected by router**
- **Connected by driving software**
- **Connected by website**

1. Connected directly by Ethernet cable

Connect the printer at one end of the network cable and the other end to the computer in the following ways:

■ Modify the computer IP address

- 1) Open the printer tool software and select the current printer model. (Take TP80BE as an example)



Note: The current computer is disconnected from the Internet

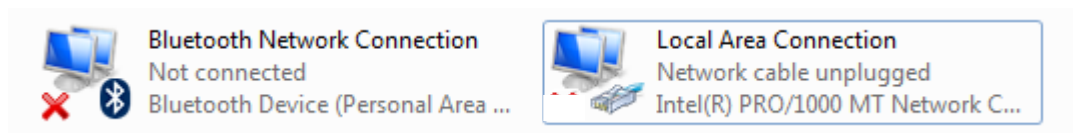
Click "Printer Test", select "Self Test", you can view the printer IP address from the Self-test page.

For example, from the following Self-Test page information can know that the printer IP address is: 10.0.16.40.

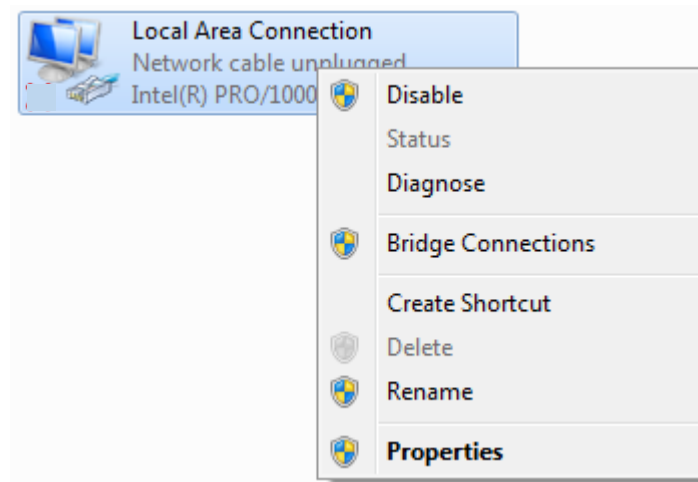
SELF-TEST	
Brand:	HPRT
MODEL:	TP80BE
FW Version:	SV1 .00. 05
CG Version:	SV1 .00. 11
Serial Num	XXXXX
Interface: USB & Serial & Ethernet	
Serial 9600, None,8,1,DTR/DSR	
IP Adress:	10.0.16.40
SubnetMask	255.255.255.0
Gateway:	10.0.16.1
MAC Address	80: 1F: 12:99: B0:03
DHC	Disable

2) Modify the computer IP address in the following steps.

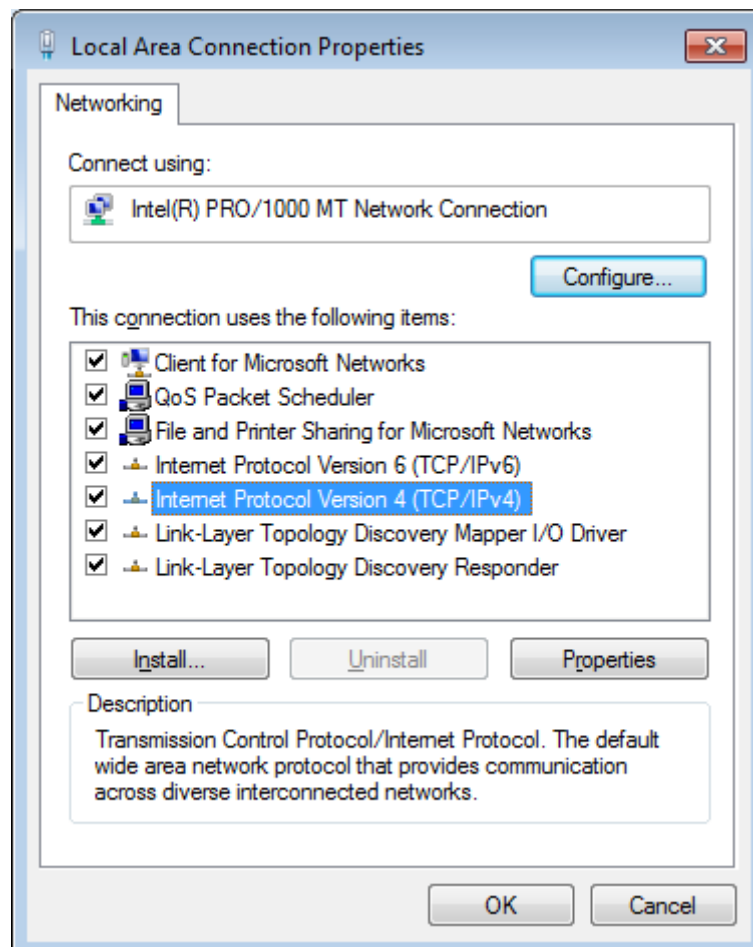
Click "Start"-"Control Panel" to find "Network and Internet". Click "Change Adapter Settings".



- Right-click the network and select "Properties".



- Double-click "TCP/IPv4" to enter the computer IP address modification page.



Internet Protocol Version 4 (TCP/IPv4) Properties

General Alternate Configuration

You can get IP settings assigned automatically if your network supports this capability. Otherwise, you need to ask your network administrator for the appropriate IP settings.

☒ Obtain an IP address automatically:

☐ Use the following IP address:

IP address: . . .

Subnet mask: . . .

Default gateway: . . .

☒ Obtain DNS server address automatically

☐ Use the following DNS server addresses:

Preferred DNS server: . . .

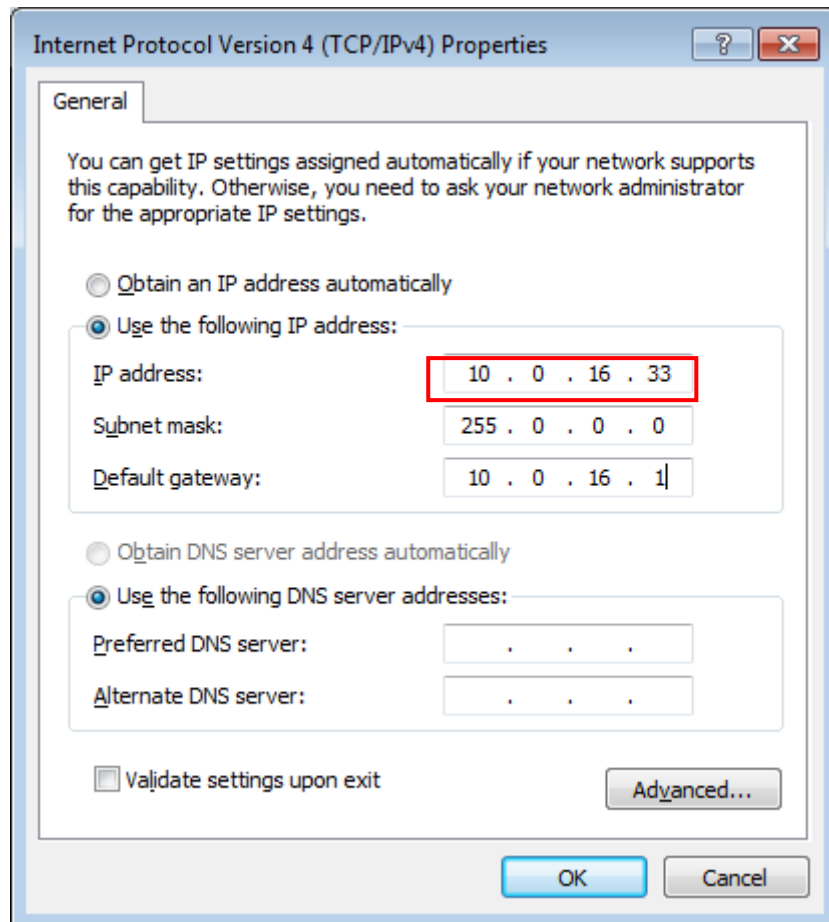
Alternate DNS server: . . .

☐ Validate settings upon exit

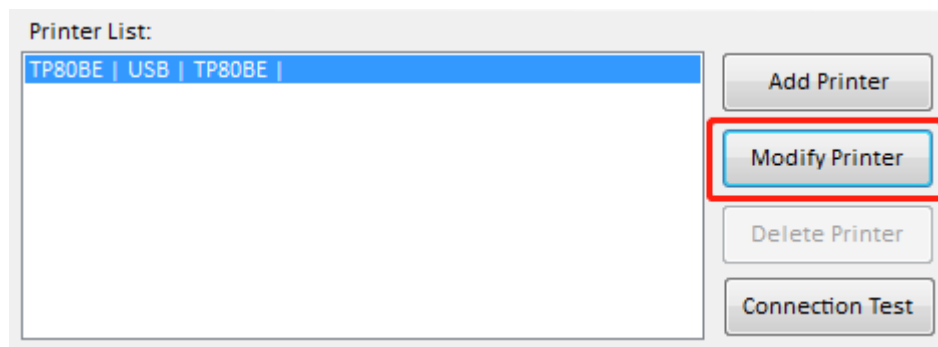
Advanced...

OK Cancel

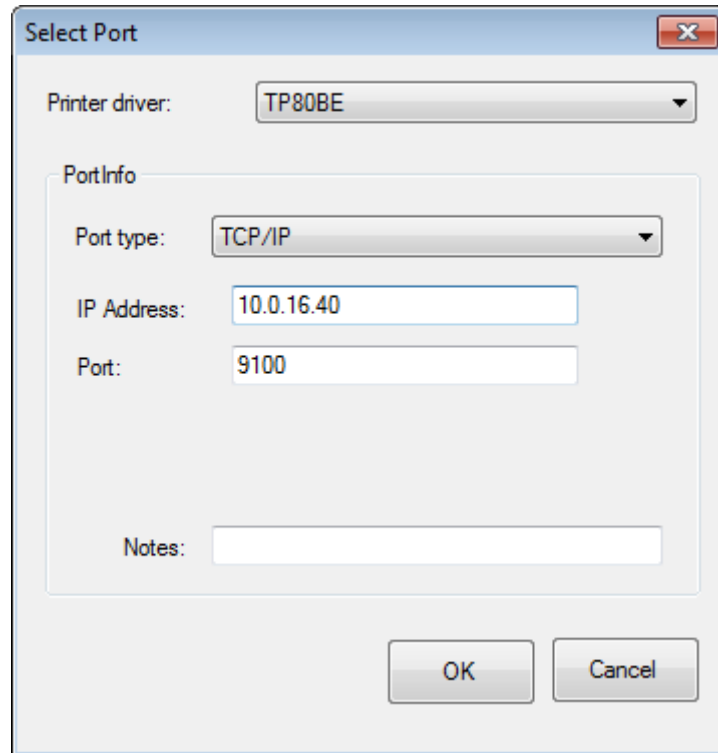
- Change the COMPUTER address (for example, 10.0.16.33) so that the COMPUTER IP address is in the same network segment as the printer IP address, and in the figure, click OK.



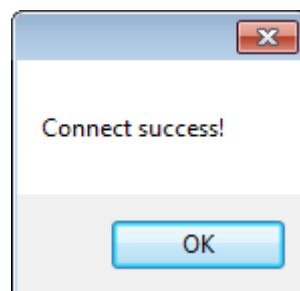
- 4) After the COMPUTER re-recognizes the IP address, return to the main menu page of the tool and click "Modify Printer".



- 5) Modify the “portInfo” to TCP/IP, and modify the IP address to the printer current IP address, and click OK.



- 6) Return to the main page of tool menu and click "Connection Test". When pop up the following "connection succeeded" means that the printer is connected to the computer.



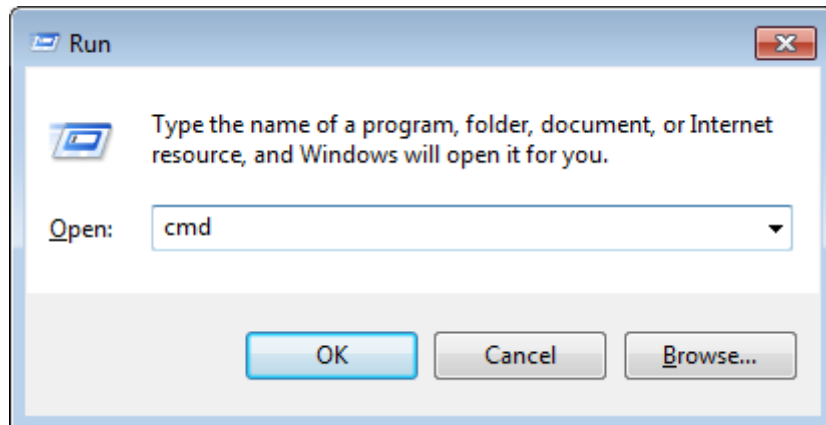
2. Connected by Router

When the printer and the computer are connected to the same router, the operation is as follows:

■ One: Modify the printer IP address

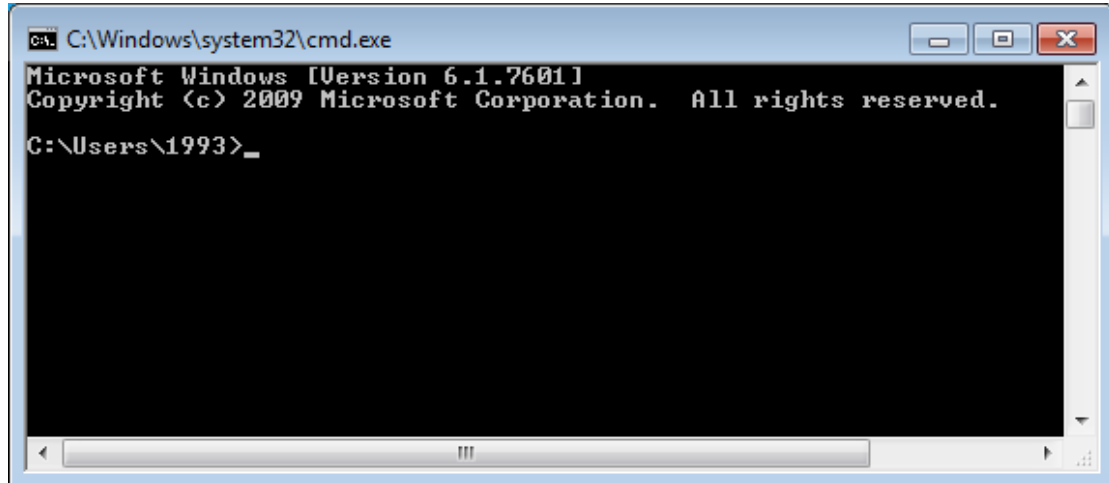
1) View the computer IP address in the following ways:

- Click "Start" and select "Run".
- Input "cmd" and enter/ click "OK".

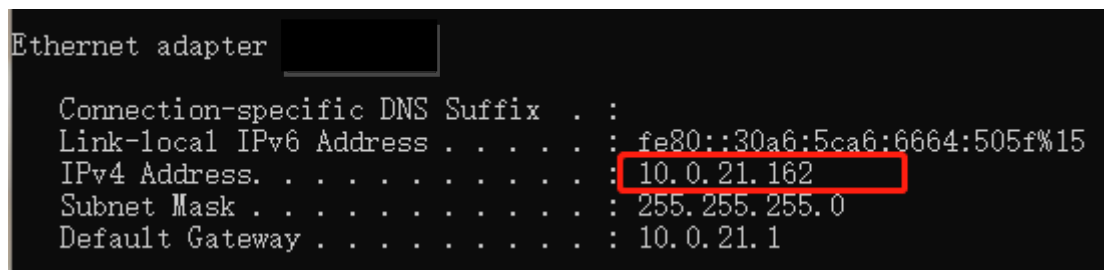


- You can view the IP address of your computer by entering “ipconfig + enter”.

(For example, the computer IP address is: 10.021.162)

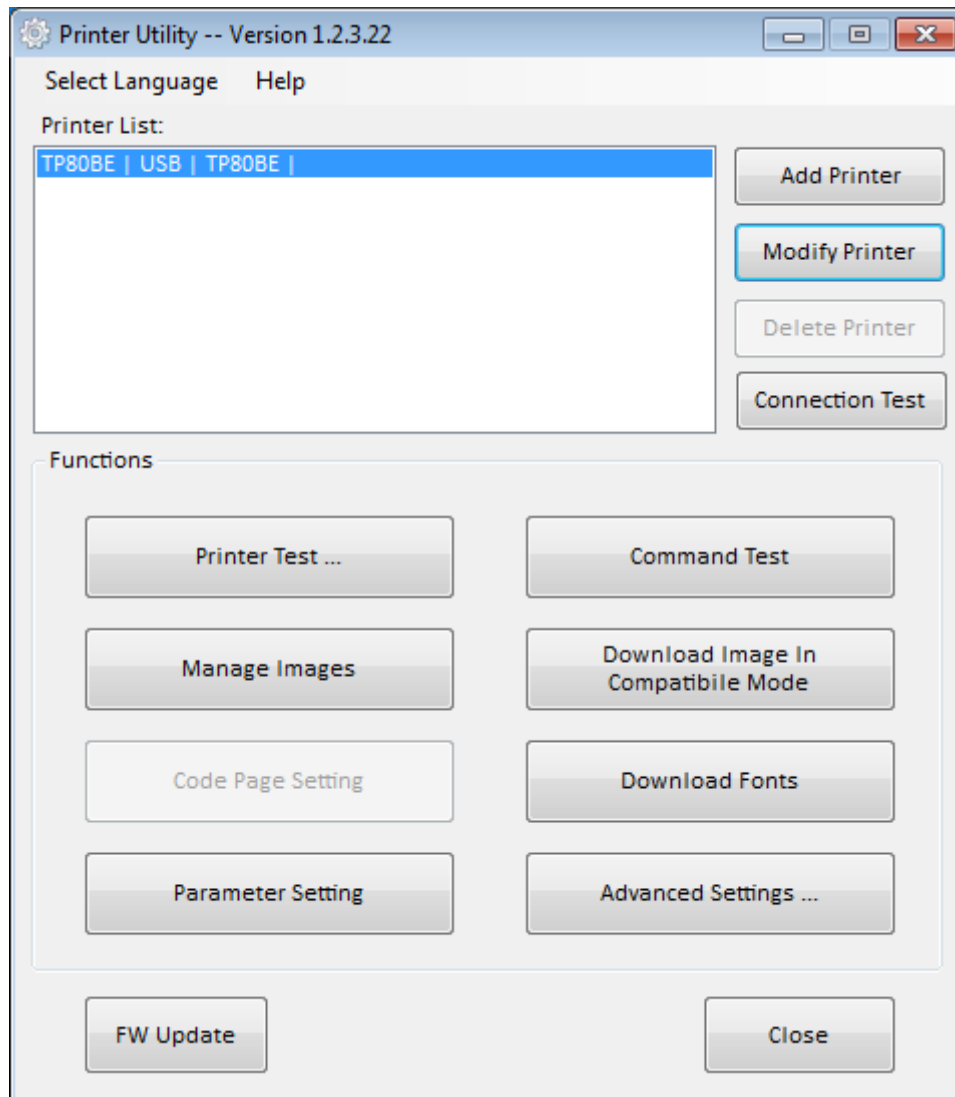


```
C:\Windows\system32\cmd.exe
Microsoft Windows [Version 6.1.7601]
Copyright (c) 2009 Microsoft Corporation. All rights reserved.
C:\Users\1993>_
```



```
Ethernet adapter [Name]
Connection-specific DNS Suffix . : 
Link-local IPv6 Address . . . . . : fe80::30a6:5ca6:6664:505f%15
IPv4 Address. . . . . : 10.0.21.162
Subnet Mask . . . . . : 255.255.255.0
Default Gateway . . . . . : 10.0.21.1
```

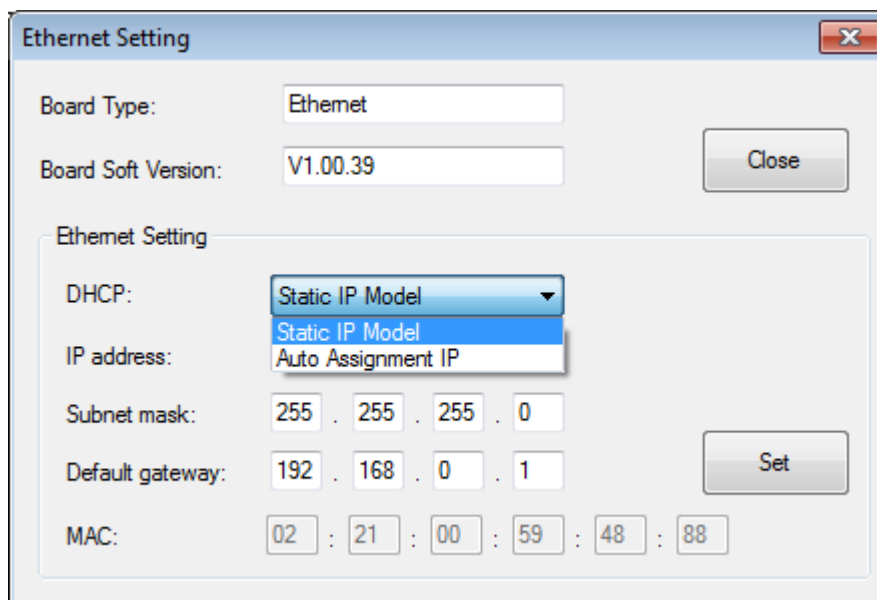
2) Open the printer tool software and select the current printer model. (Take TP80BE as an example)



3) Click “Advanced Settings” to select “Ethernet setting”.



4) Select static “Static IP mode or Auto assignment IP” (Note: “Auto assignment IP” mode is the router is automatically assigned with the printer).



- 5) Set the printer IP address to the same network segment as the computer, click "Set", and restart the printer.

Ethernet Setting [X]

Board Type:

Board Soft Version:

Ethernet Setting

DHCP:

IP address: . . .

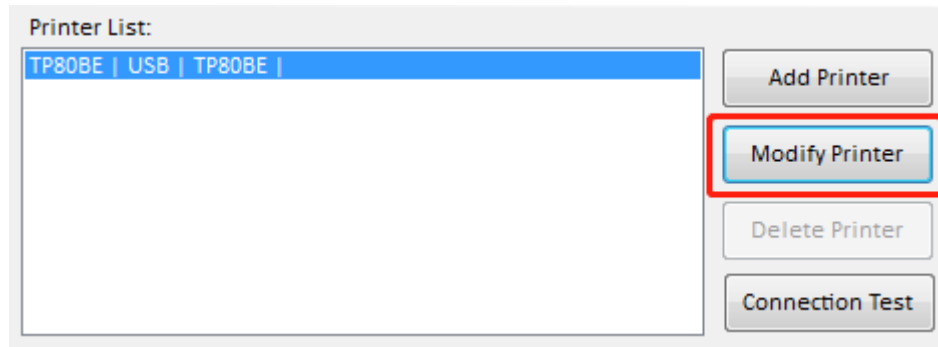
Subnet mask: . . .

Default gateway: . . .

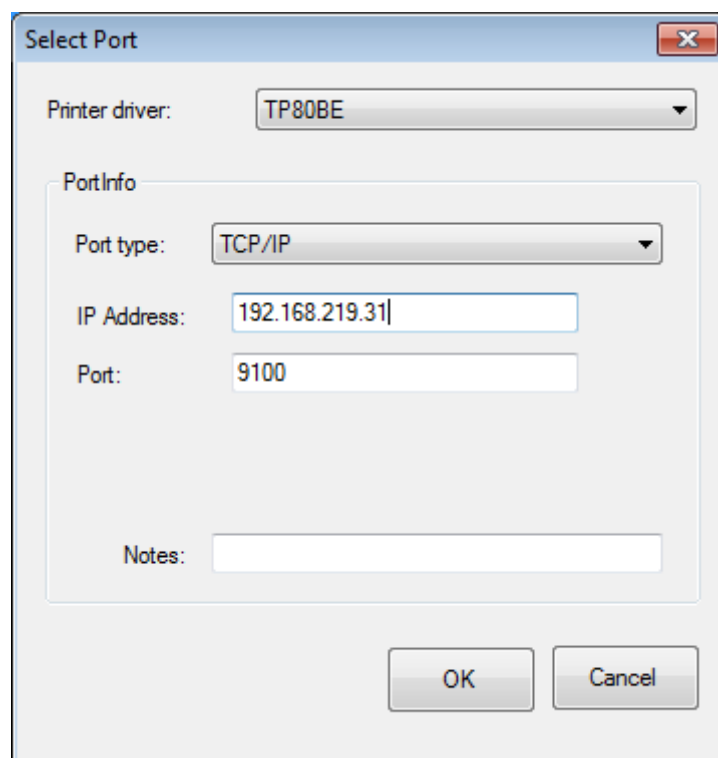
MAC: : : : : :

Note: The same network segment refers to the first three digits are same, the last value is not the same. And the value change range is "1~255".

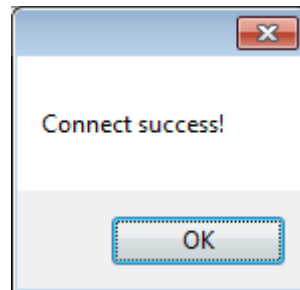
3) Return to the main menu page of the tool and click "Modify Printer".



4) Modify the "portInfo" to TCP/IP and modify the IP address to the printer current IP address, and click OK.

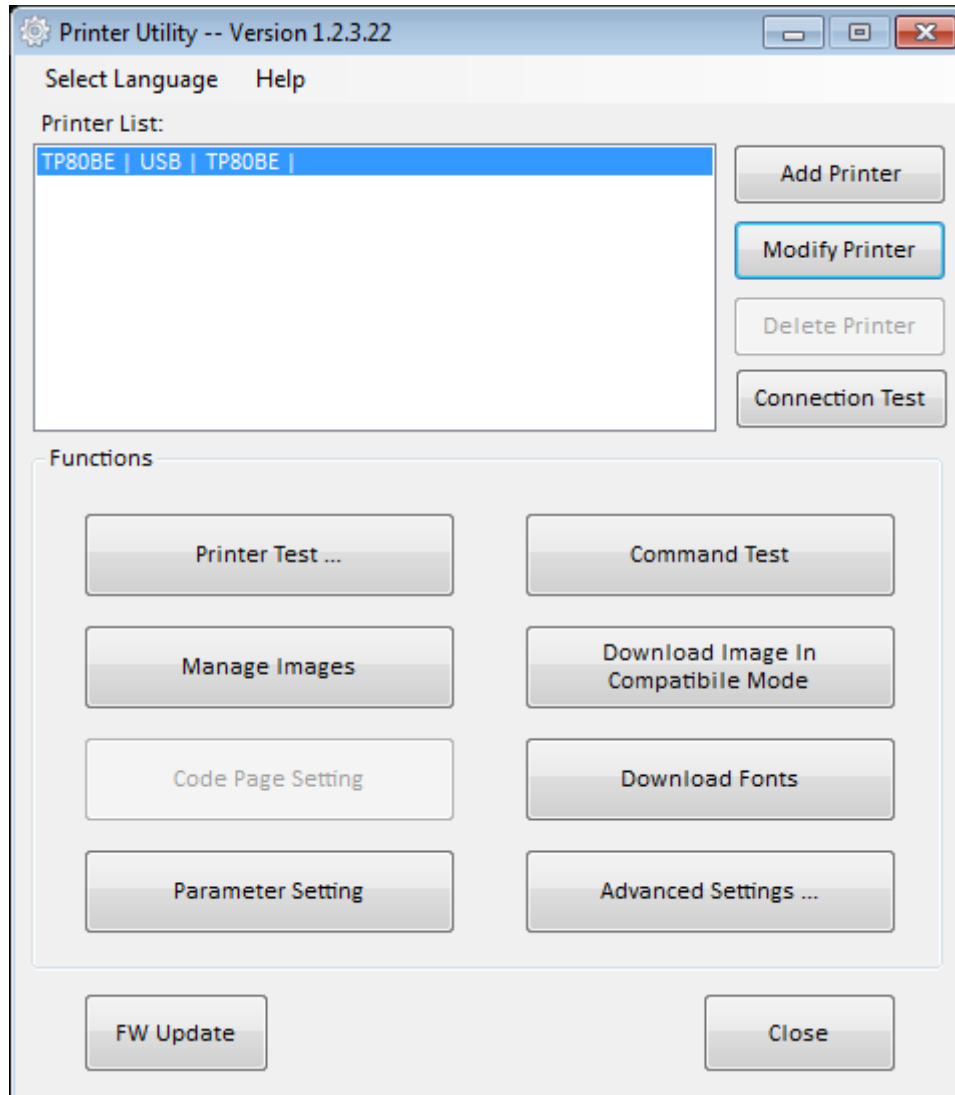


- 5) Return to the main page of tool menu and click "Connection Test". When pop up the following "connection succeeded" means that the printer is connected to the computer.



■ Two: Modify the computer IP address

- 1) Open the printer tool software and select the current printer model.



- 2) Click "Printer Test", select "Self Test", you can view the printer IP address from the Self-test page.

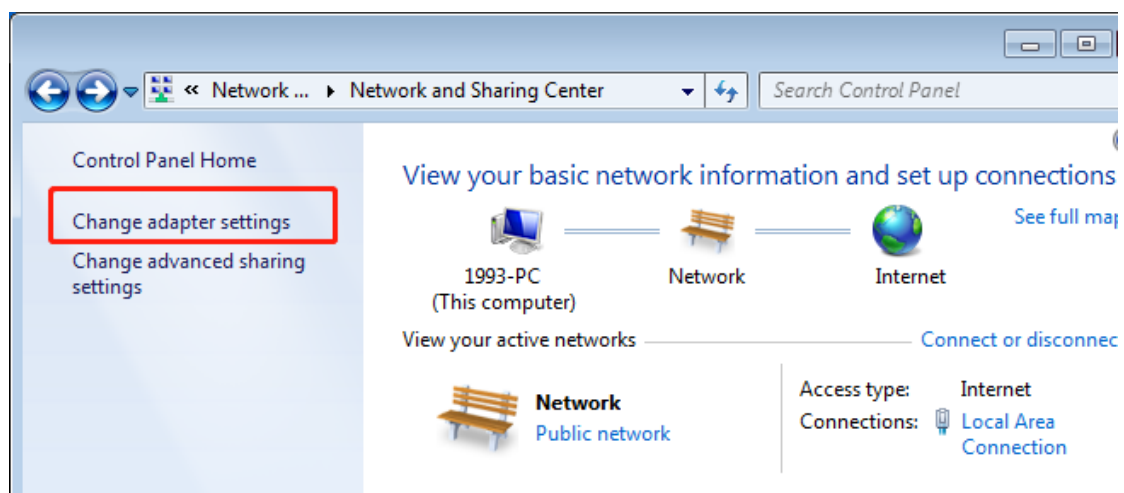
For example, from the following Self-Test page information can know that the printer IP address is: 10.0.16.40.

SELF-TEST

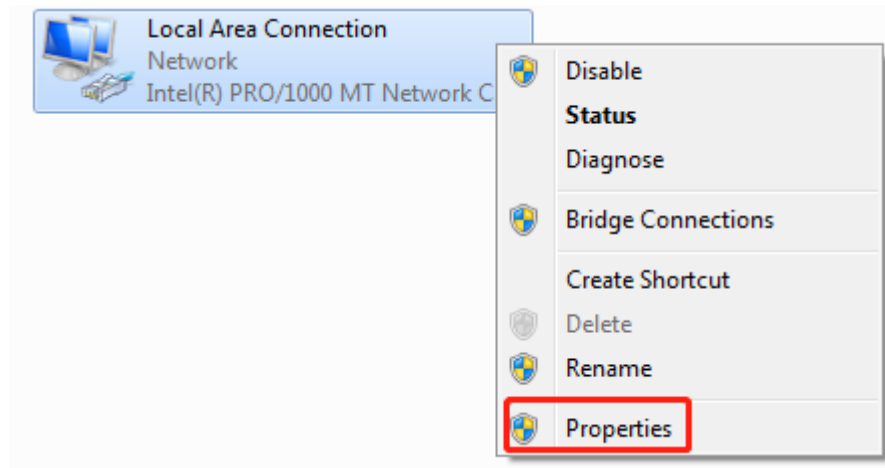
Brand:	HPRT
MODEL:	TP80BE
FW Version:	SV1. 00. 05
CG Version:	SV1. 00. 11
Serial Num	XXXXX
Interface:	USB & Serial & Ethernet
Serial	9600, None,8,1,DTR/DSR
IP Adress:	10.0.16.40
SubnetMask	255.255.255.0
Gateway:	10.0.16.1
MAC Address	80: 1F: 12:99: B0:03
DHC	Disable

- 3) Modify the computer IP address in the following steps.

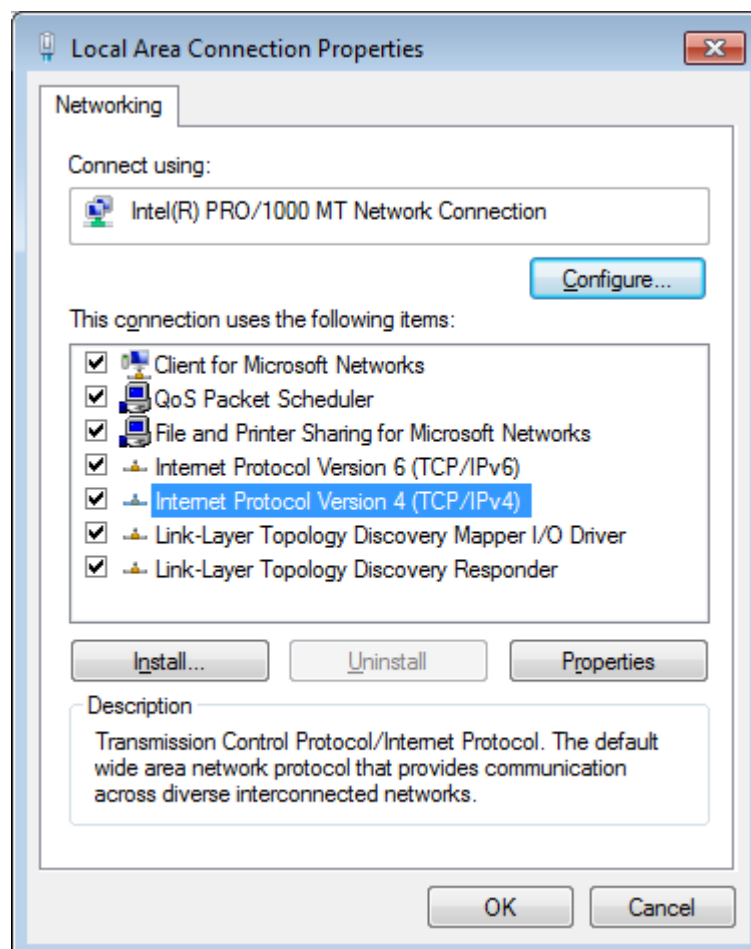
▪Click "Start"-"Control Panel" to find "network and Sharing Center"; Click "Change Adapter Settings".



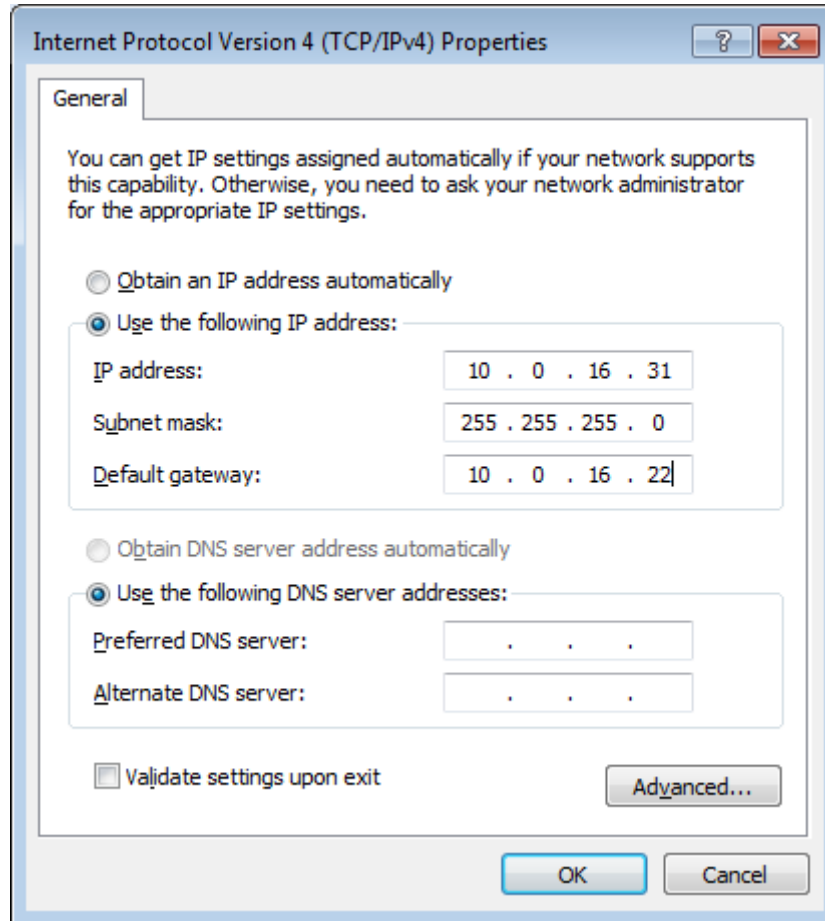
- Right-click the network that is currently connected to the printer and click “Properties”.



- Double-click "TCP/IPv4" to enter the computer IP address modification page.

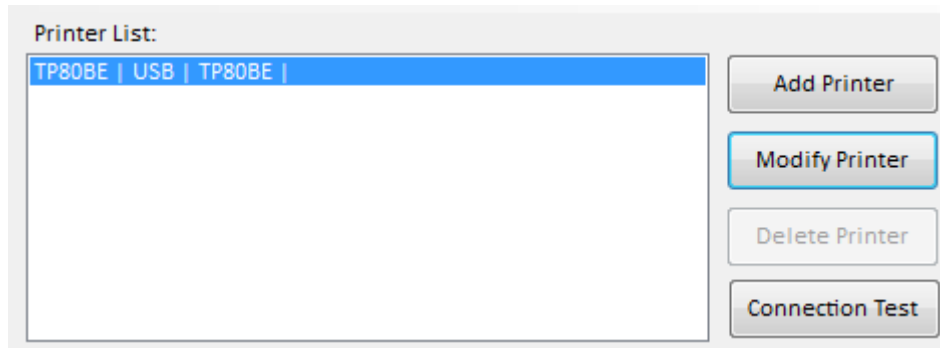


- Select “Use the following IP address” to set the computer IP address to be in the same network segment as the printer IP address; In the following, click OK.

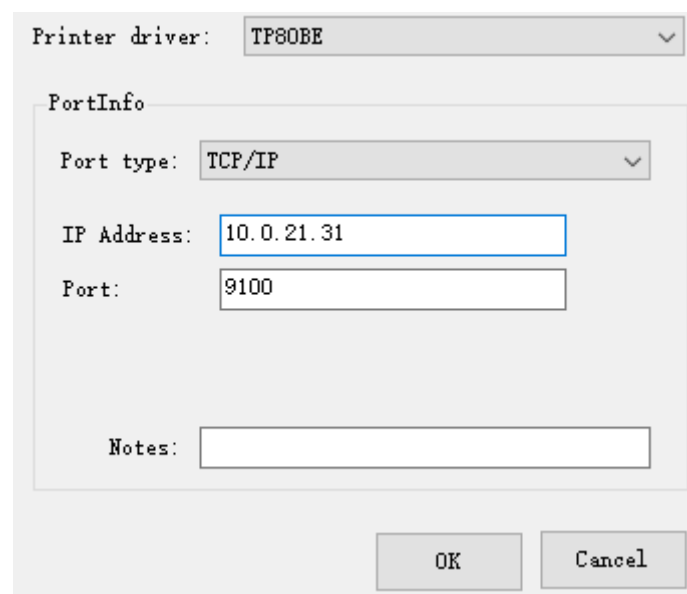


Note: The same network segment refers to the first three digits are same, the last value is not the same. And the value change range is "1~255".

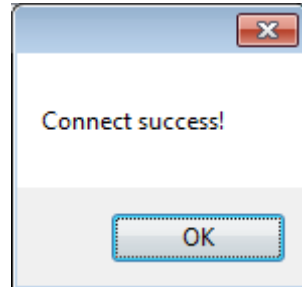
- 4) After the COMPUTER re-recognizes the IP address, return to the main menu page of the tool and click "Modify Printer".



- 5) Modify the "portInfo" to TCP/IP and modify the IP address to the printer current IP address, and click OK.

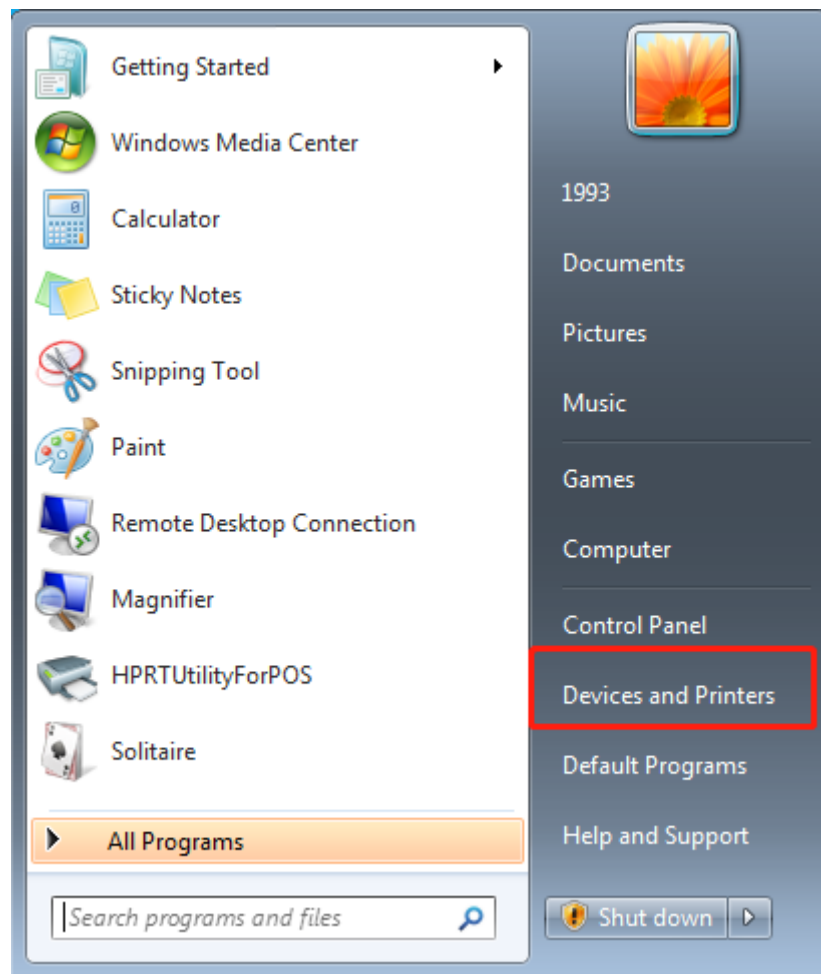


- 6) Return to the main page of the tool menu and click "Connection Test". When pop up the following "connection succeeded" means that the printer is connected to the computer.

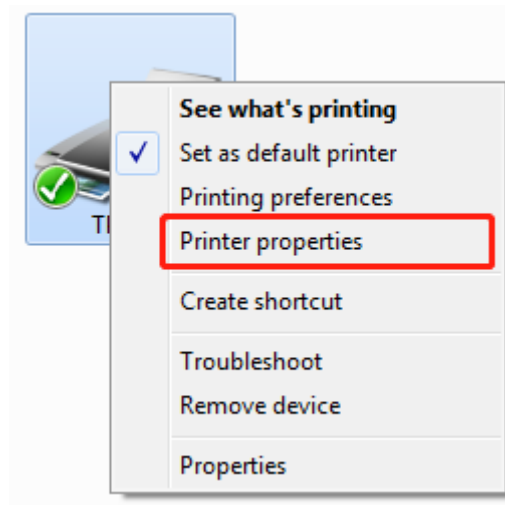


3. Connected by Driver

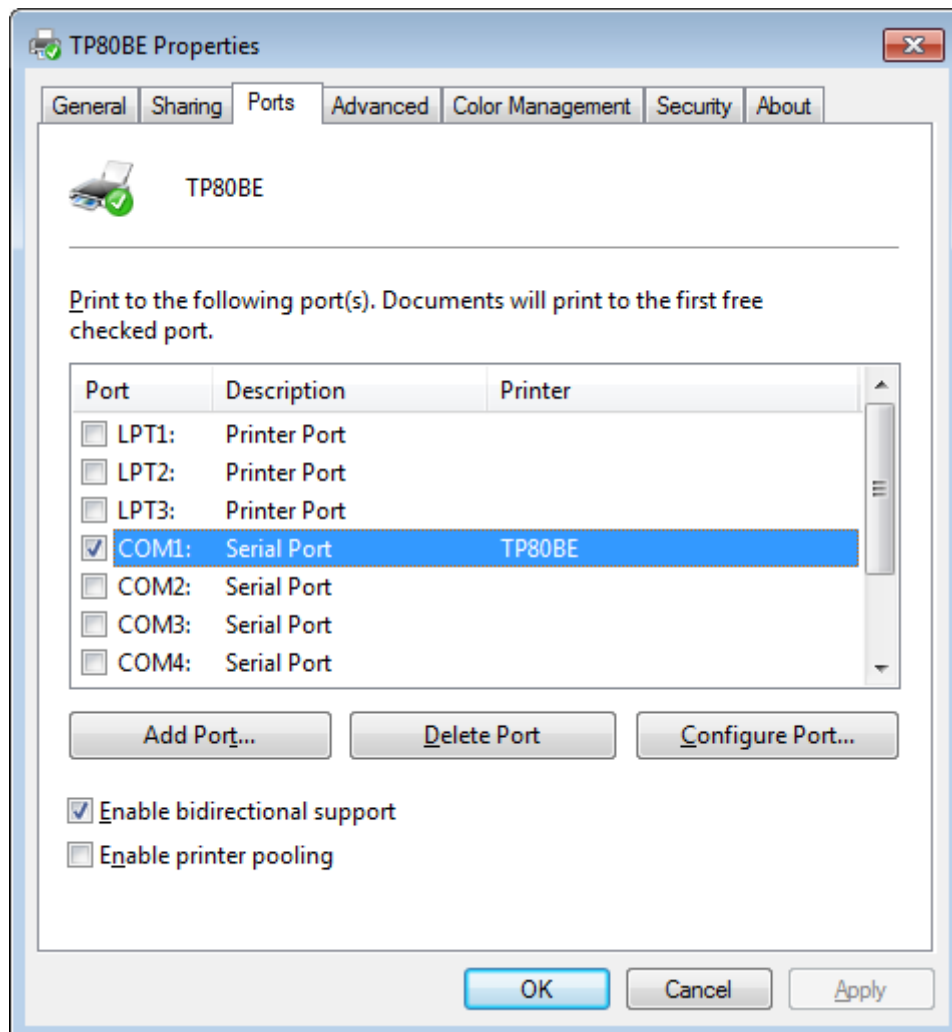
- 1) Install the printer driver. (Take TP80BE as an example)
- 2) Print the Self-test page through the tool software to get the printer IP address.
(For example, the printer IP address is: 192.168.1.99)
- 3) When the drive installation is completed, click "Start" and select "Device & amp; printer".



4) Right-click the current printer and select “Printer properties”.



5) Click "Port".

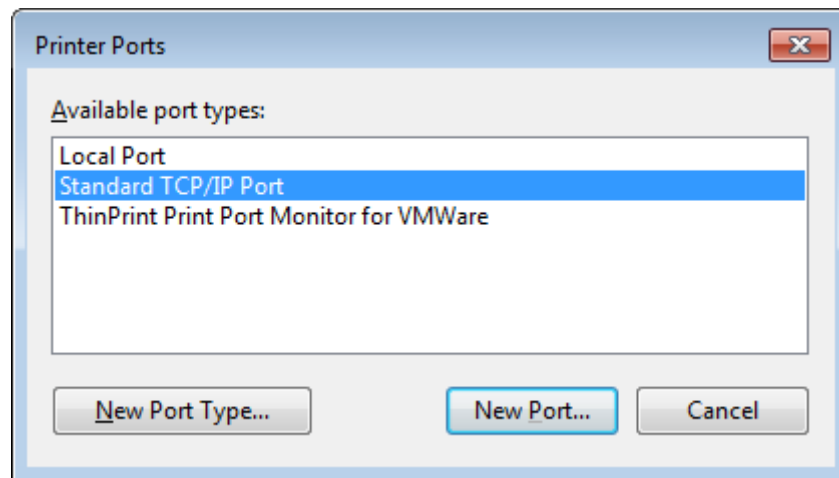


6) Click “Add Port”.

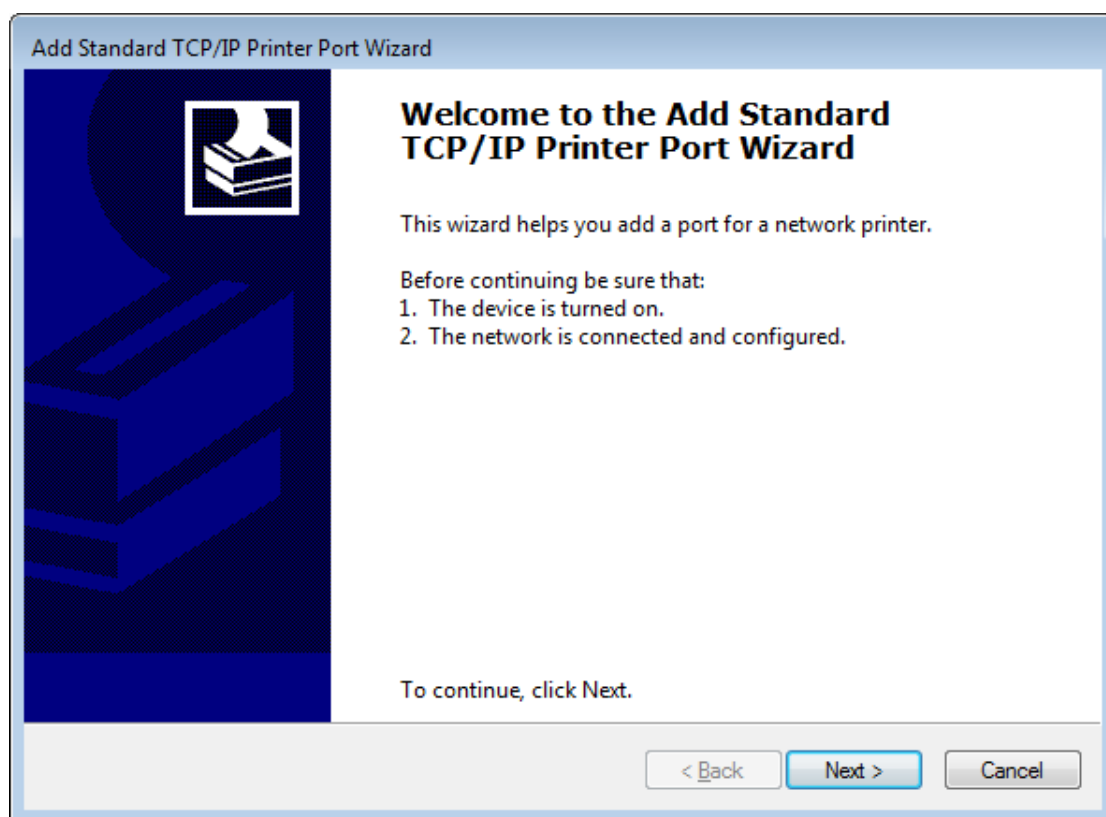
Port	Description	Printer
<input type="checkbox"/> LPT1:	Printer Port	
<input type="checkbox"/> LPT2:	Printer Port	
<input type="checkbox"/> LPT3:	Printer Port	
<input checked="" type="checkbox"/> COM1:	Serial Port	TP80BE
<input type="checkbox"/> COM2:	Serial Port	
<input type="checkbox"/> COM3:	Serial Port	
<input type="checkbox"/> COM4:	Serial Port	

Add Port... Delte Port Configure Port...

7) Select "Standard TCP/IP Port", and then click "New port".



8) Click "Next".



9) Enter the printer name or IP address and click “Next”.

Add Standard TCP/IP Printer Port Wizard

Add port
For which device do you want to add a port?

Enter the Printer Name or IP address, and a port name for the desired device.

Printer Name or IP Address: 192.168.1.99

Port Name: 192.168.1.99

< Back Next > Cancel

Detecting TCP/IP port
Windows is detecting the TCP/IP port and will move to the next page when finished.

Detecting the TCP/IP port...
Windows will automatically move to the next page when the detection is done.

10) Click "Next".

Add Standard TCP/IP Printer Port Wizard

Additional port information required
The device could not be identified.

The device is not found on the network. Be sure that:

1. The device is turned on.
2. The network is connected.
3. The device is properly configured.
4. The address on the previous page is correct.

If you think the address is not correct, click Back to return to the previous page. Then correct the address and perform another search on the network. If you are sure the address is correct, select the device type below.

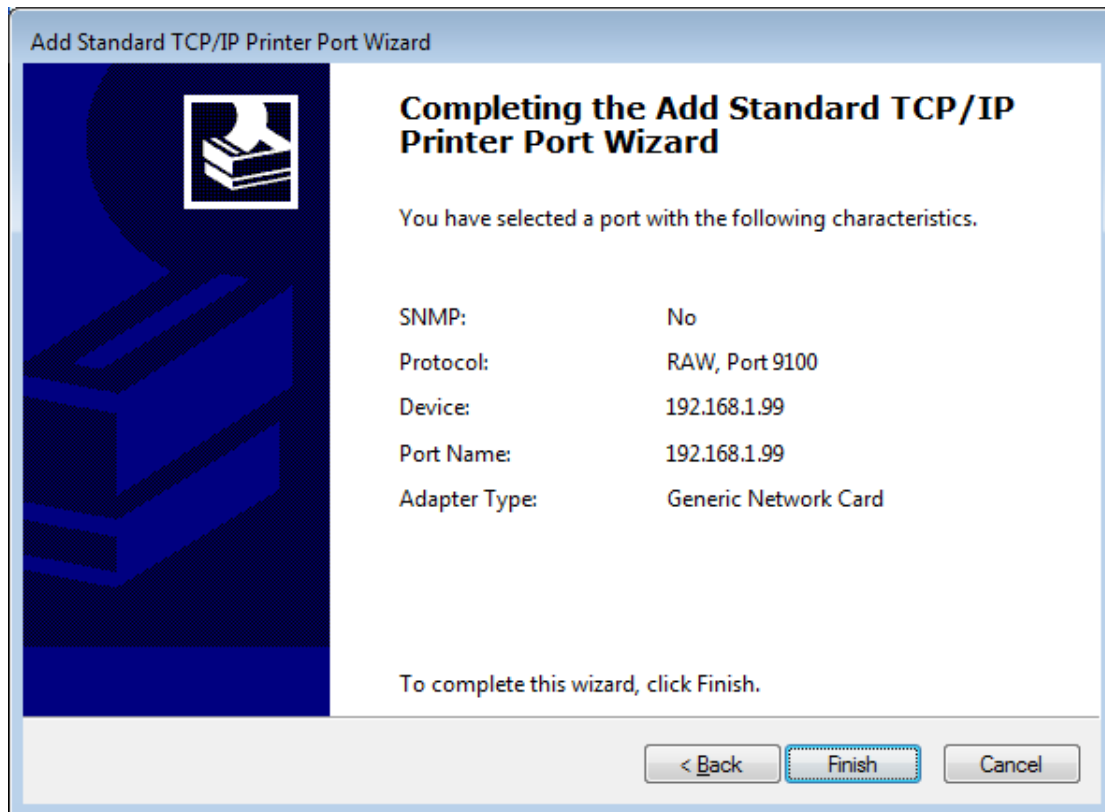
Device Type

☒ Standard Generic Network Card

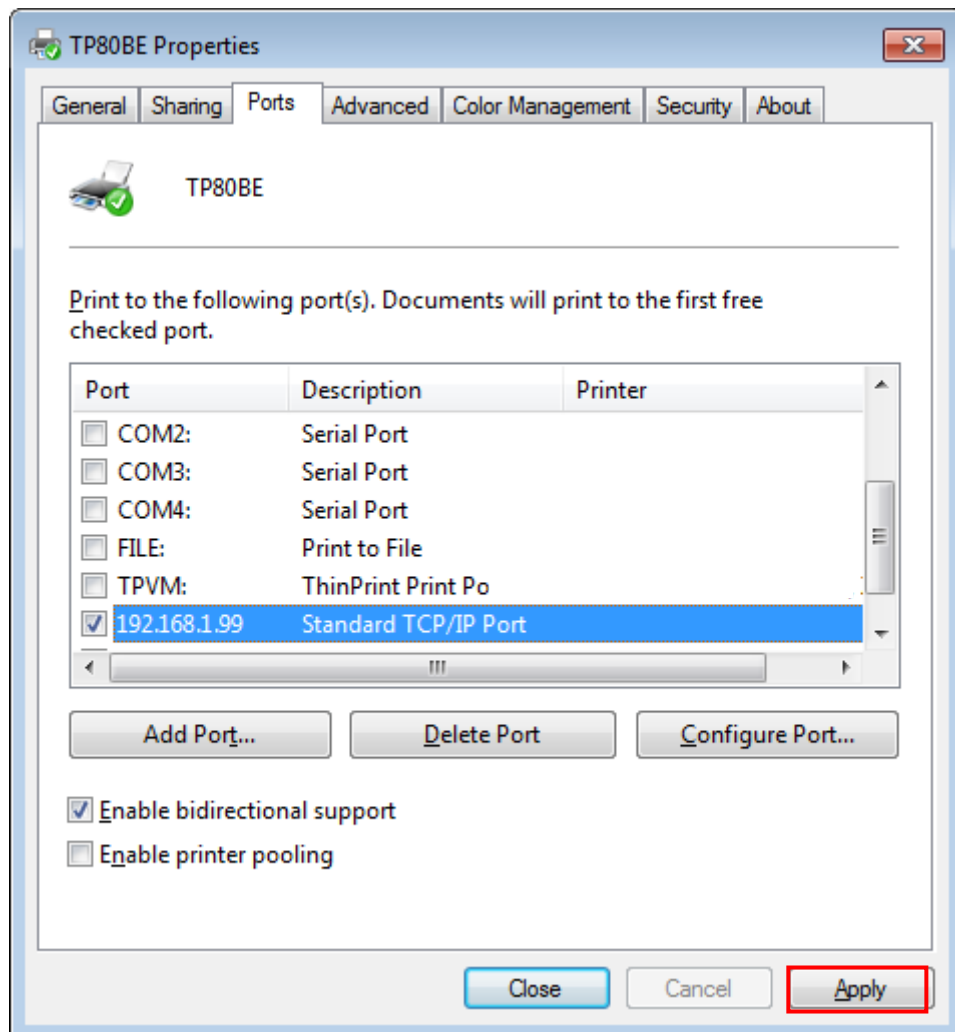
☐ Custom Settings...

< Back Next > Cancel

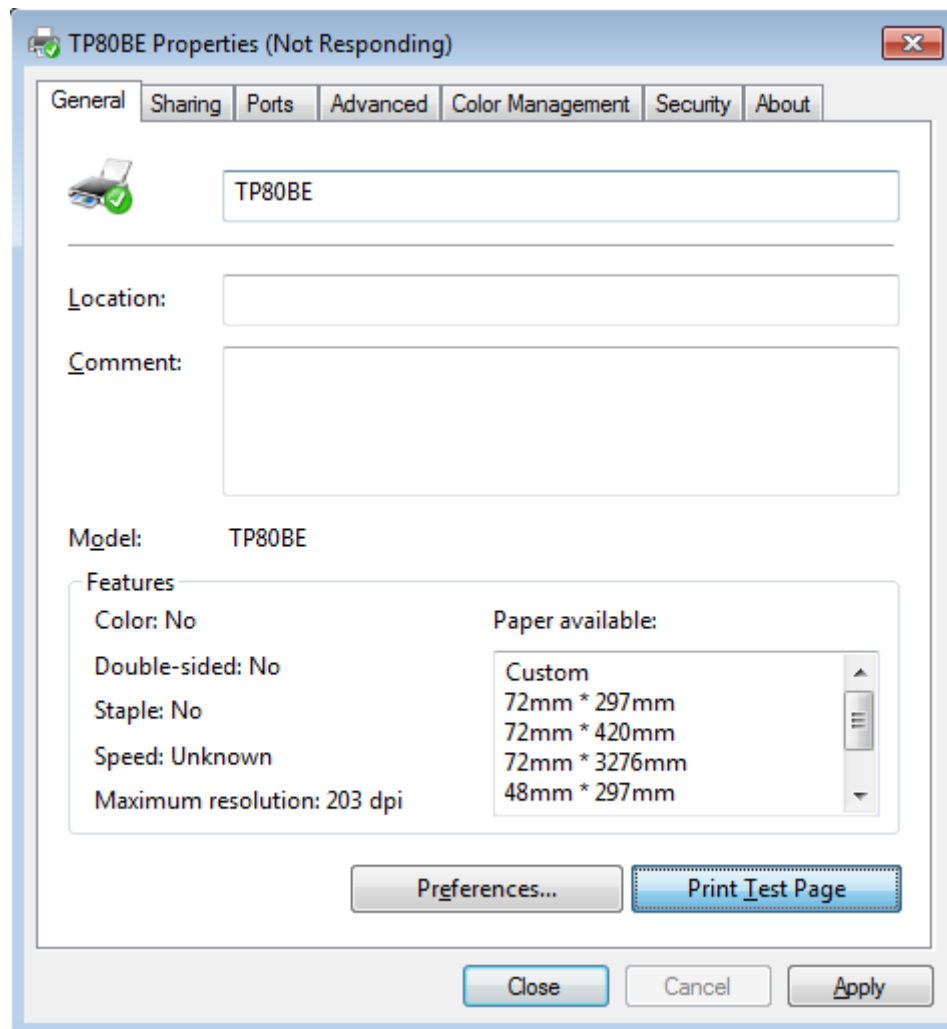
11) Click "Next".



12) Return to the port page, select the port you have added, and click “Apply”.

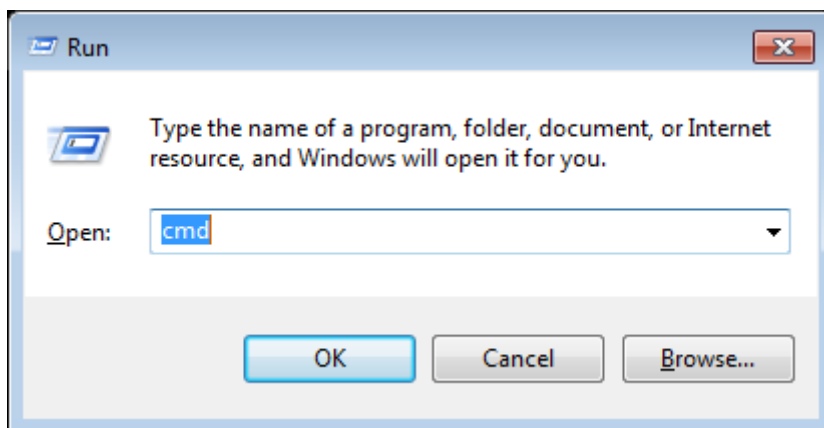


13) Click “General”, and select “Print test page” to test whether the printer is connected to the computer.



4. Connected by Website

- 1) Connect the printer to your computer.
- 2) Select one of the above Ethernet connections to connect the printer to your computer.
- 3) Print the Self-test page through the tool software to get the printer IP address.
(For example, the printer IP address is: 10.0.21.31)
- 4) Click "Start" in computer and select "Run".
- 5) Input "cmd" enter.



- 6) Input "Ping 10.0.21.31 enter" to check if the printer and computer are connected successfully.

```
Microsoft Windows [Version 10.0.17763.107]
(c) 2018 Microsoft Corporation. All rights reserved.

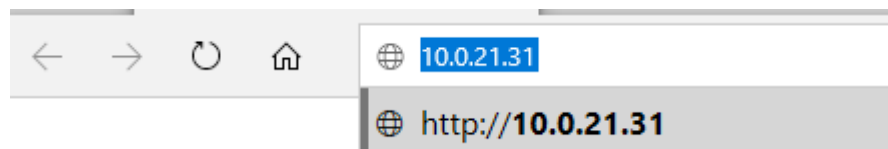
C:\Users\Administrator>ping 10.0.21.31

Pinging 10.0.21.31 with 32 bytes of data:
Reply from 10.0.21.31: bytes=32 time=1ms TTL=255
Reply from 10.0.21.31: bytes=32 time=1ms TTL=255
Reply from 10.0.21.31: bytes=32 time<1ms TTL=255
Reply from 10.0.21.31: bytes=32 time<1ms TTL=255

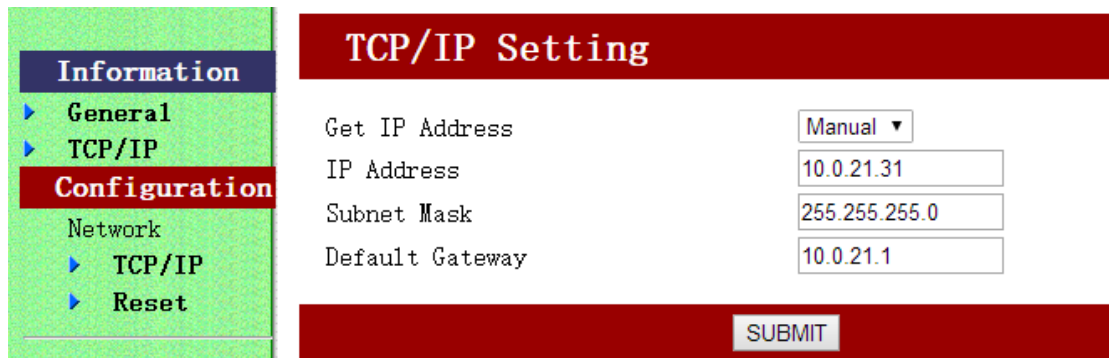
Ping statistics for 10.0.21.31:
    Packets: Sent = 4, Received = 4, Lost = 0 (0% loss),
    Approximate round trip times in milli-seconds:
        Minimum = 0ms, Maximum = 1ms, Average = 0ms

C:\Users\Administrator>
```

- 7) Open the browser and input the URL: 10.0.21.31 enter, as shown in the figure.



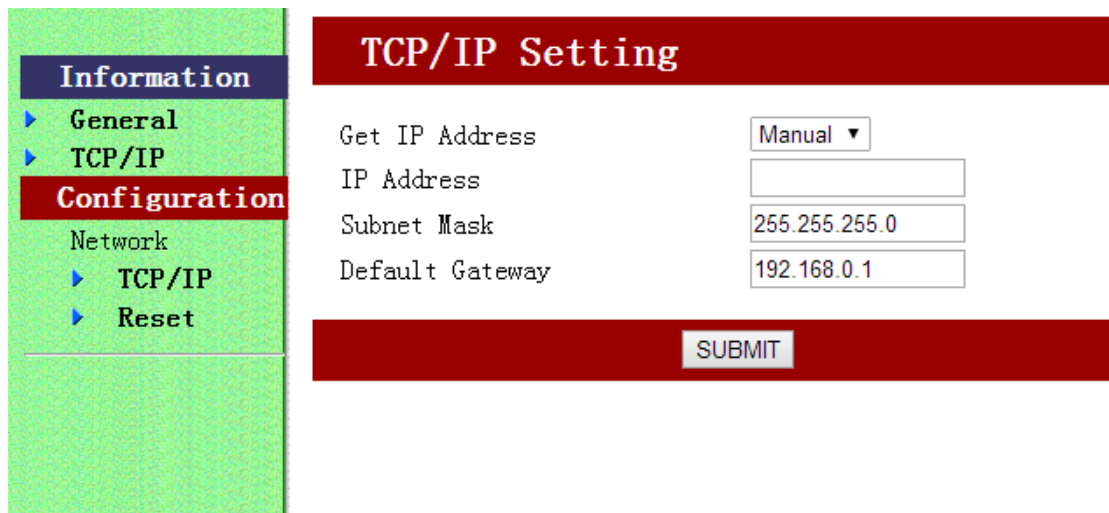
8) Click "Information"->"TCP/IP" to view the current printer IP.



The screenshot shows a web interface for printer configuration. On the left is a green sidebar with a menu. The 'Information' section is expanded, showing 'General' and 'TCP/IP'. The 'Configuration' section is also expanded, showing 'Network', 'TCP/IP', and 'Reset'. The 'TCP/IP' option is selected. The main content area has a red header 'TCP/IP Setting'. Below the header, there are four rows of configuration options: 'Get IP Address' with a dropdown menu set to 'Manual', 'IP Address' with a text box containing '10.0.21.31', 'Subnet Mask' with a text box containing '255.255.255.0', and 'Default Gateway' with a text box containing '10.0.21.1'. At the bottom right of the main area is a 'SUBMIT' button.

TCP/IP Setting	
Get IP Address	Manual ▼
IP Address	10.0.21.31
Subnet Mask	255.255.255.0
Default Gateway	10.0.21.1
SUBMIT	

9) Click "Configuration"->"TCP/IP"-To modify the printer IP address.



The screenshot shows the same web interface as before, but with the 'IP Address' field empty, indicating it is ready to be modified. The 'SUBMIT' button is still present at the bottom right.

TCP/IP Setting	
Get IP Address	Manual ▼
IP Address	
Subnet Mask	255.255.255.0
Default Gateway	192.168.0.1
SUBMIT	